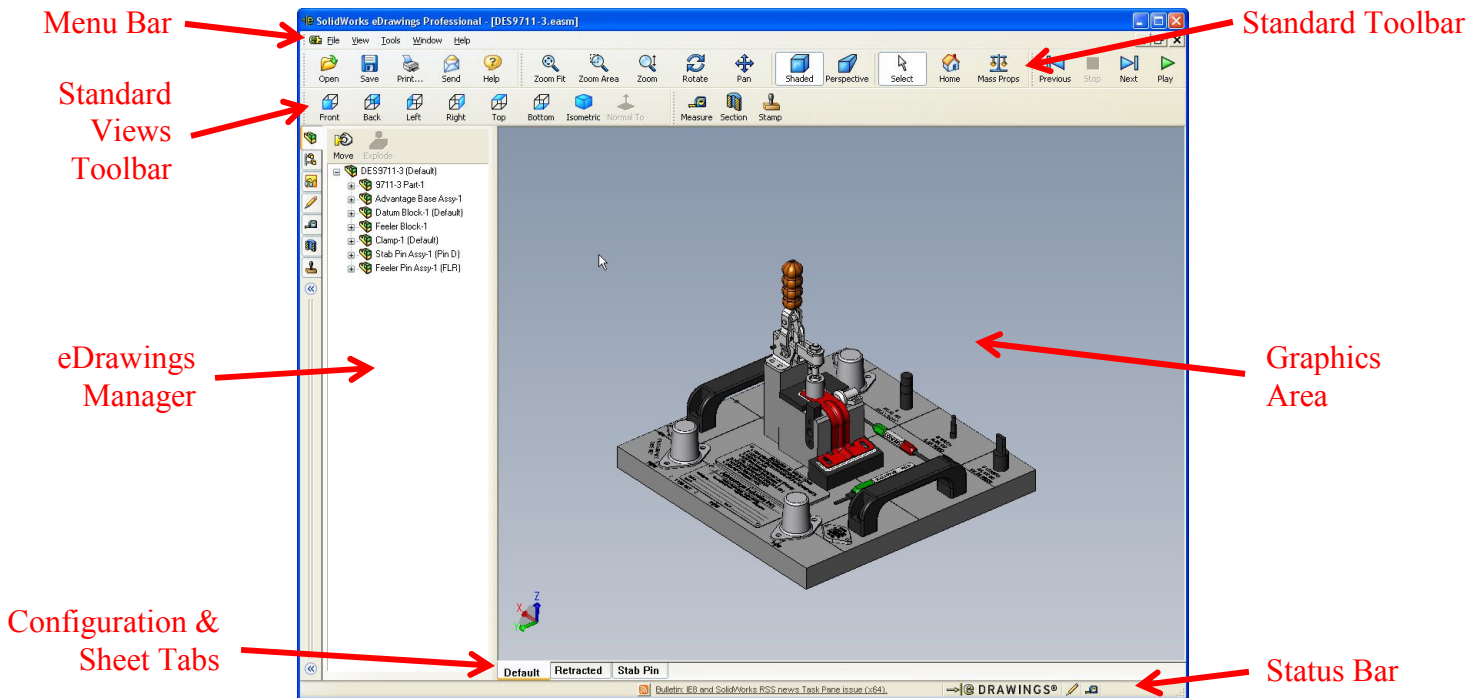


# Using eDrawings



Open eDrawings from either the Desktop or from the Start Menu by clicking on the eDrawings icon. eDrawings can also be started by opening files directly from Windows Explorer.



- **Supported File Types:**

- **eDrawings Files**

- \*.eprt (part files)
    - \*.easm (assembly files)
    - \*.edrw (drawing files)

- **Solidworks Files**

- \*.sldprt (part files)
    - \*.sldasm (assembly files)
    - \*.slddrw (drawing files)

- **AutoCAD Files**

- \*.dxf (Viewed as 2D)
    - \*.dwg (Viewed as 2D)

- **Pro/ENGINEER Files**

- \*.prt (part files)
    - \*.asm (assembly files)

## Using eDrawings

- **Status Bar** (Can be turned ON and OFF using the View Menu)



**Review Enabled.** (Comments can be added to a file using Markup).



**Review Disabled.** (Comments can not be added to a file).

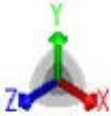


**Measure Enabled.** (Measurements can be taken using the Measure tool).



**Measure Disabled.** (Measurements can not be taken).

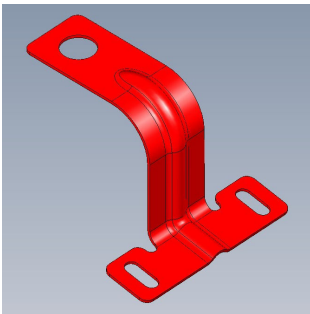
- **Graphics Area**



**Triad.** (Shows the orientation of the X, Y and Z axis in 3D space).



**Shaded.** (Model is displayed in shaded mode).



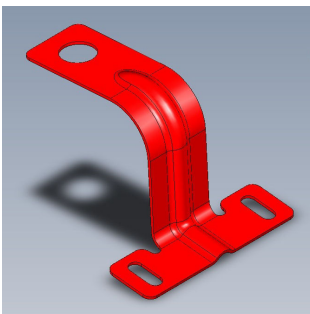
**Show Edges When Shaded.** (Shows the edges of surfaces).

[Click View, Show Edges when Shaded](#)

Or

[Right click graphics area for Shortcut Menu](#)

[Click View, Show Edges when Shaded](#)



**Display shadows.** (Drops a shadow onto the XY plane).

[Click Tools, Options..., Display shadows](#)

# Using eDrawings

- **eDrawings Manager**



Clicking on the arrows or between the arrows will expand or collapse the eDrawing Manager. Collapsing the eDrawing Manager will make the graphics area larger and will hide everything except for the tabs and arrows. **Note: Selecting on a tab will also expand the eDrawing Manager.**



**Components.** (Shows a list of parts and assemblies).

- Select on an icon or a name to highlight and select a part or assembly in the graphics area.
- Select on the move button at the top of the eDrawings Manager to activate the move tool. Used to move highlighted parts and assemblies in graphics area by clicking and dragging. Right click item in graphics area to **Undo Move** or use the Home Button to reset the graphics display.
- Right click on an icon or a name to display a shortcut menu.
  - Hide** (Hides the selected part or assembly).
  - Make Transparent** (Makes the selected part or assembly transparent).
  - Hide Others** (Hides everything except the selected part or assembly).
  - Show All** (Shows all hidden parts or assemblies).
  - New Part Document** (Creates a new eDrawing file of selected part or assembly).



**Configurations.** (Shows a list of configurations and Display States).

- Select on a configuration icon to change the model in the graphics area to the selected configuration.
- Select on a display state icon or a name to change the display state of the active configuration in the graphics area. (Changing the display state may make items change color or visibility depending on how the file was created). **Note: Selecting the Home Button will change the display state of a configuration to its intended display state.**



**Markup.** (Allows a user to add dimensions, pictures, notes, dimensions and draw lines, boxes, circles, arcs and splines which are saved as comments).

- Selecting on a comment will change the graphic area to the same orientation the screen was at when the comment was made and will display the comment.
- Right click on a comment to display a shortcut menu.
  - Reply** (Allows a user to add a comment in response to a comment).
  - Rename** (Allows a user to rename a comment).
  - Delete Comment** (Allows a user to delete comments).
  - Properties...** (Allows a user to change name, phone number, email address, color, line thickness and text font and size for all comments, the current comment or new comments).

# Using eDrawings



**Measure.** (Allows a user to measure points, angles, distances, circles and arcs).

- Select on the measure button at the top of the eDrawings Manager or the measure button in the Standard Toolbar to activate the measure tool.
- Select items to measure in the graphics area. Items will highlight red in the graphics area to indicate what will be selected if you click the mouse. Once selected the items will be highlighted green in the graphics area.
- **Selection Filters** (Select one or more filters to limit what can be selected. If no filters are selected, you can select any measureable item in the graphics area).
- **Selected Items** (When items are selected they are given a name and a number and placed in the list. To remove items from the list, select an item in the list and press delete on the keyboard or reselect an item in the graphics area. To clear the list select empty space in the graphics area).
- **Units** (Select unit of measure for distance and angle from pull-down menus).
- **Results** (Displays the result of the measurement). **Note: Results are also displayed in the graphics area.**



**Cross Section.** (Allows a user to cut sections through the model).

- Select on the section button at the top of the eDrawings Manager or the section button in the Standard Toolbar to activate the section tool. Once selected a section plane will be displayed in the graphics area.
- To move the plane select the plane and drag it to a new location.
- **Cross Section Plane Selection** (Used to define section plane, the XY plane is the default plane)
  - XY Plane** (Section plane starts at XY plane and can be dragged parallel to XY plane).
  - ZY Plane** (Section plane starts at ZY plane and can be dragged parallel to ZY plane).
  - XZ Plane** (Section plane starts at XZ plane and can be dragged parallel to XZ plane).
  - Face Plane (Select face first)** (Section plane starts at selected face and can be dragged parallel to selected face). **Note: Double clicking on a face also moves the section plane to the selected face. If a face is not flat the section plane will remain parallel to the previously selected plane but will still move to selected face.**
  - Flip** (Flips which side of the sectioned model remains displayed).
  - View normal to Plane** (Displays the model normal to the section plane).
  - Show Plane** (Turns the visibility of the section plane on and off).
  - Show Cap** (When turned off the sectioned model will appear hollow instead of as a solid filled object).

# Using eDrawings

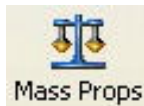
- **Standard Toolbar**



**Home.** (Resets the graphic display by returning everything to its default appearance and view).



**Measure.** (Activates the measure tool).



**Mass Properties.** (Displays the material, density, mass, volume and surface area). **Note: If a material is not specified, density is assumed to be 1.00grams per cubic millimeter.**



**Cross Section.** (Activates the cross section tool).



**Zoom to Fit.** (Fits and centers the model in the graphic display area).



**Zoom to Area.** (Zooms to a selected window in the graphic display area).



**Zoom In/Out.** (Zooms in and out by clicking and dragging in the graphic display area).



**Rotate.** (Rotates the model by clicking and dragging in the graphic display area).



**Pan.** (Pans the model by clicking and dragging in the graphic display area).

- **Keyboard**

**Arrow Keys** (Press to rotate the model in 10° increments in the direction pushed).